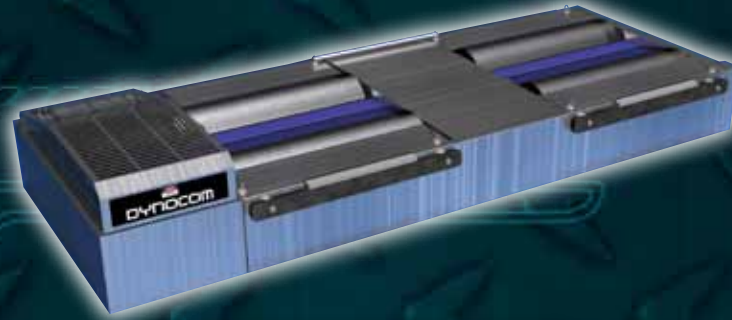


- In early 2000 Dynocom Industries was formed as a division of its parent company which has been successfully operating since 1975. At Dynocom Industries we saw a need to make an affordable chassis dynamometer system with all the options utilizing the latest technologies (wireless, 3D, USB, etc). Historically the automotive industry has been slow to adopt cutting edge data acquisition controls. Coming from the high-tech sector where speed-to-market is critical we took the same ideologies and transformed them into Dynocom Industries. Utilizing Dynocom's parent company (Chemical/Manufacturing) know-how, Dynocom evolved into the fastest growing dynamometer company in the world. From our two years in Beta testing to our 7th year in business we have doubled in size every year (both in square footage and in personnel).

- We pride ourselves on our commitment to customer service; we survey our existing customers every six months for their feedback on our systems. We have set up a free user forum on our web site which is available 24 hours a day, 7 days a week. We strive to provide the best quality (now industry leader with 2 year warranty) and the best service. Contact our sales department for a list of customers you can contact for references. We understand that a dynamometer purchase is a substantial investment and we are proud to support our customers and their business for the years to come.

- On September 1st, 2006 Dynocom Industries opened our United States Headquarters in Fort Worth, Texas. Texas is the perfect location with the DFW hub and easy access for our international and domestic customers. This location is great step forward for Dynocom Industries. We need to be where our customers are and Fort Worth, Texas as our American headquarters is a perfect place to be. With the opening of our new Training and Technical Center, new and existing customers can visit us easily. Now with offices in Japan, New Zealand, Australia and South East Asia our products have global support and recognition. Call or visit www.dynocom.net for the latest news, products updates and technical bulletins.

OTHER DYNOCOM MODELS



5000 SERIES



7500 SERIES



DC-POD

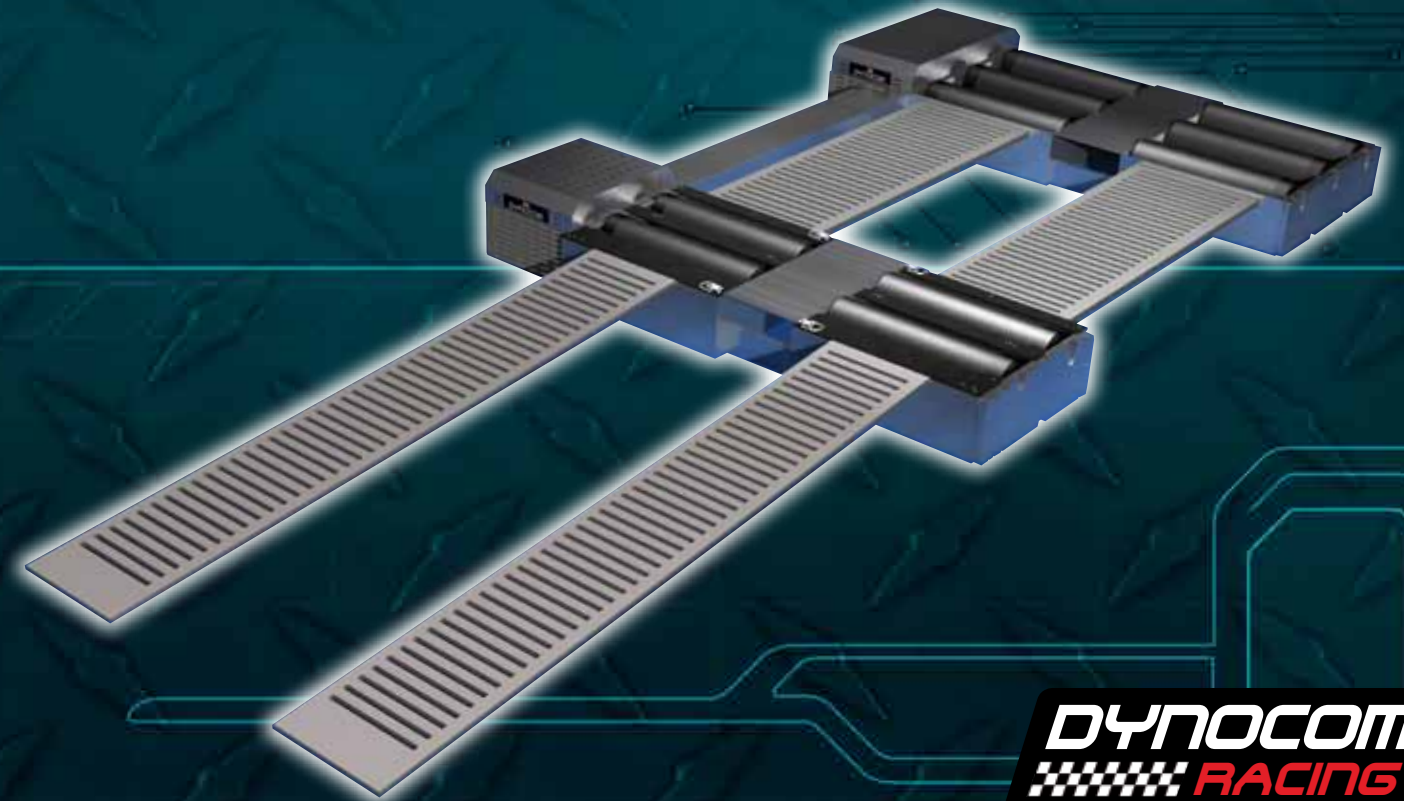


AWD 7500

DYNOCOM INDUSTRIES INC.

AUTOMOTIVE DYNAMOMETERS & DIAGNOSTIC TEST EQUIPMENT

AWD 5000/ 6500-FX



DYNOCOM INDUSTRIES INC.

PRICE. PERFORMANCE. PERIOD.



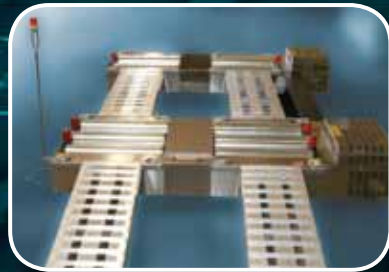
Your Safety First

All of our 5000 series units include standard wheel stabilizer bars to prevent the vehicle from moving off of the rollers.



The Strongest Belts in the World

The belt linkage system is comprised of 4 massive Gates Poly Chain® GT2® belts. These belts are superior to competitors rubber belts both for speed and horsepower ratings.



Portability = Opportunities

Set up & Take down in less than an hour. Imagine being able to attend car shows, race tracks, etc where no matter what vehicle your customer brings you can dyno it on-site.



Beautiful and functional

The AWD 5000-FX is comprised of stainless steel hybrid construction with lightweight aluminum ramps. This AWD system is beautiful and functional. All rollers have machined grooves for traction.



FRENESLA eddy brake/Plug & Play

Dynocom integrates only the highest quality parts - the 5000 Series utilizes only FRENESLA eddy brakes which are recognized as the world's highest quality. Be wary of competitor units that use the cheapest available retarders which are only a fraction of the cost of our eddy brakes and are of significantly lower quality. Less expensive eddy brakes also have significantly less load-holding capacity. The quality of the eddy brakes will be a reflection of how much trouble-free life your dyno is likely to provide. No Costly wiring necessary /pre-wired from the factory.



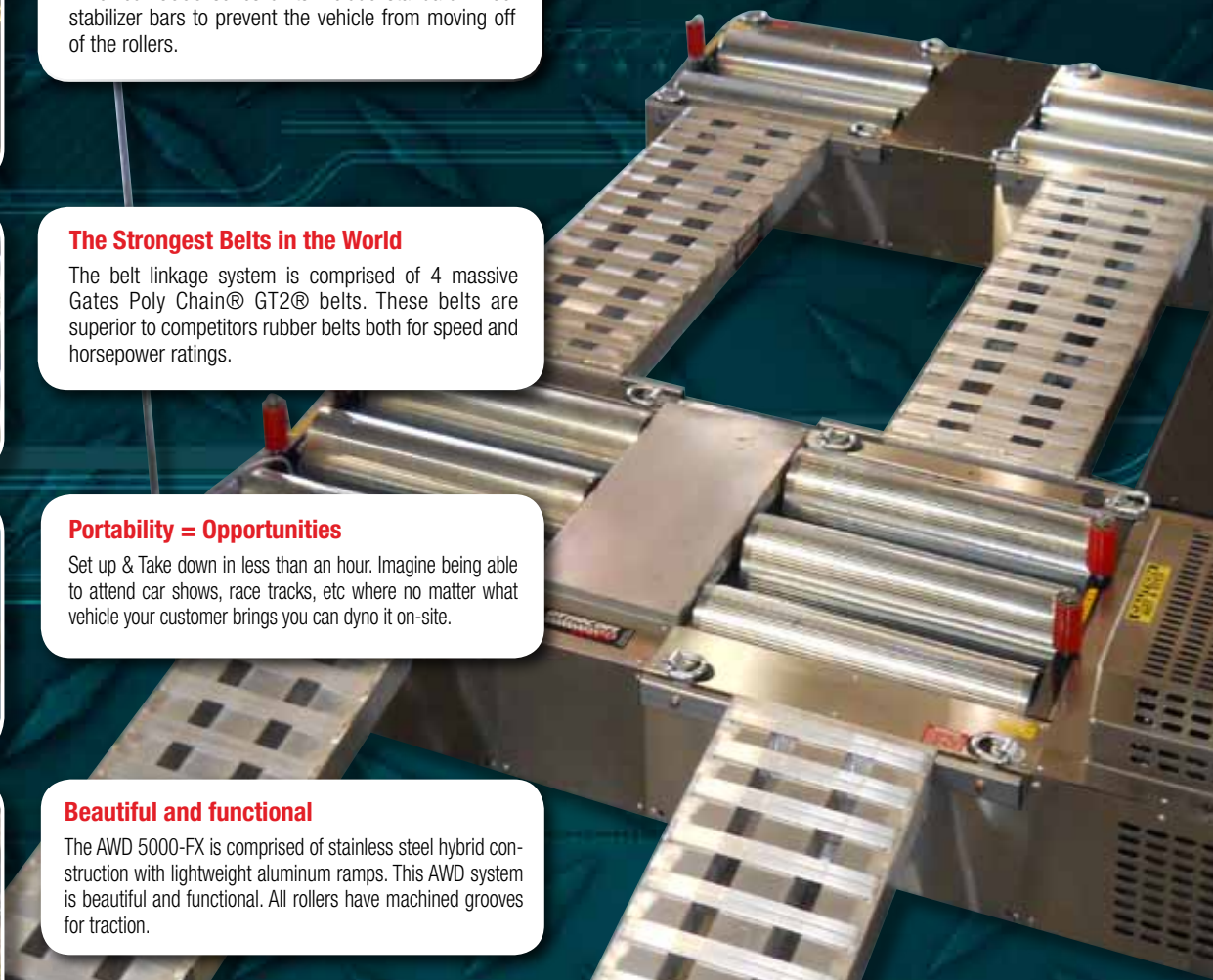
5000 Series Lift Assist/Vertical Tie Down Option

This optional airbag assisted lift kit helps to lift up the vehicles for easy loading and unloading. There is also a brake kit to stop the roller. It can be added to any existing unit in the field. The unit consist of two assemblies, one for each wheel. Also integrates with a vertical tie down bar which allows for higher repeatability on each dyno run.



Highest Load

CNC taper shaft for the highest load and speed - a first in the dyno industry.

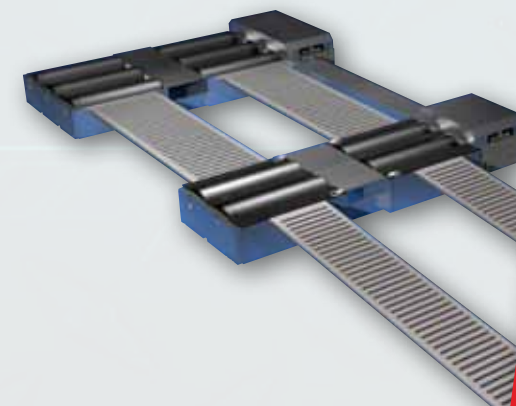


Dynocom has introduced the world's most affordable high performance and advanced AWD mechanically linked system. The AWD 5000/6500-FX dynamometer system is also ideal for portability: Set up and take down in less than an hour, a true first in the dynamometer industry. The AWD 5000/6500-FX front portion of the unit is a 2WD 5000 Series dynamometer and the rear is a set of linked rollers with an 86" Inch track width. What drives this linkage system are massive Gates Poly Chain® GT2® belts. The AWD 5000/6500-FX Series dyno incorporates linkage which insures that the front and rear rollers are always spinning at precisely the same road speed. This process eliminates the possibility of activating a vehicle's traction control system and also insures that a vehicle's torque management system is operating correctly. The AWD 5000/6500-FX can be operated in AWD Mode while testing two-wheel drive vehicles. This process allows the non-driven axle to be spun by the dynamometer rollers at the same speed as the driven axle, eliminating the speed differential that occurs on two-wheel drive dynamometers. The belt linkage system on the AWD 5000/6500-FX dyno has the ability to properly test the most sophisticated vehicles on the road today. Porsche's, Lamborghini's, Nissan GTR's and other modern AWD vehicles with a non 50/50 split.

The AWD 5000/6500-FX was designed for a variety of different testing scenarios – FWD/RWD Cars, Sport Compacts, Motorcycles and ATV's. Dynocom's eddy brake controller uses a digital phase angle modulation process to control the world class Frenesla eddy brake. This is by far superior than competitors zero cross process. Phase angle modulation is faster and more precise, allowing for greater control of the eddy brake and voltage waveforms, allowing for more responsive and positive speed synchronization. You are also able to upgrade the second bed of rollers with an additional eddy brake. It is equipped with a Frenesla eddy brake and you are able to perform acceleration, step, sweep and steady-state tests.

- View in real-time torque/horsepower output, at steady and changing speeds, to instantly evaluate changes you've made to the engine's fuel or timing maps.
- Diagnose engine and drivetrain problems.
- Run track ¼ mile or circle track lap simulations with reaction times that you determine in the software parameters.
- Troubleshoot drive ability issues.

As with Dynocom's other dynamometer systems, all of the rollers are machined grooved for superior, long lasting traction.



SPECIFICATIONS

	5000-FX	6500-FX
Maximum Speed	155 MPH	175 MPH
Max Vehicle weight/per axle	12,000 lbs	16,000 lbs
Max Axle Weight/per axle	6,000 lbs	8,000 lbs
Roller Diameter	8.5" Inches	12.75" Inches
Roller Length	86" Inches	86" Inches
Track Maximum	86" Inches	86" Inches
Track Minimum	18" Inches	18" Inches
Equivalent Linear Approx.	1200 lbs	1600 lbs
Maximum Operations Amps	40 AMPS @ 220 VAC	40 AMPS @ 220 VAC

Physical Dimensions

Width	116" Inches	116" Inches
Height	12" Inches	16.5" Inches
Height with eddy brake	17.5" Inches	18.5" Inches
Length	153" Inches	153" Inches
Weight	2200 lbs	3000 lbs
Wheelbase Minimum	96" Inches	96" Inches
Wheelbase Maximum	122" Inches	136" Inches
Maximum Axle Width	86" Inches	86" Inches
Air Requirements (Optional)	80 psi	80 psi
Timing Accuracy	+/-0.1 µs	+/-0.1 µs
Drum Speed Accuracy	+/-1/1000th MPH	+/-1/1000th MPH
RPM Accuracy	+/-1/100th RPM	+/-1/100th RPM

- With the advanced mechanical design of the AWD 5000/6500-FX and reduction in unnecessary and failure prone components, the AWD 5000/6500-FX is the most advanced and affordable AWD system in the world offering a level of performance, technology, and advanced superior design not found in systems priced at much higher levels.