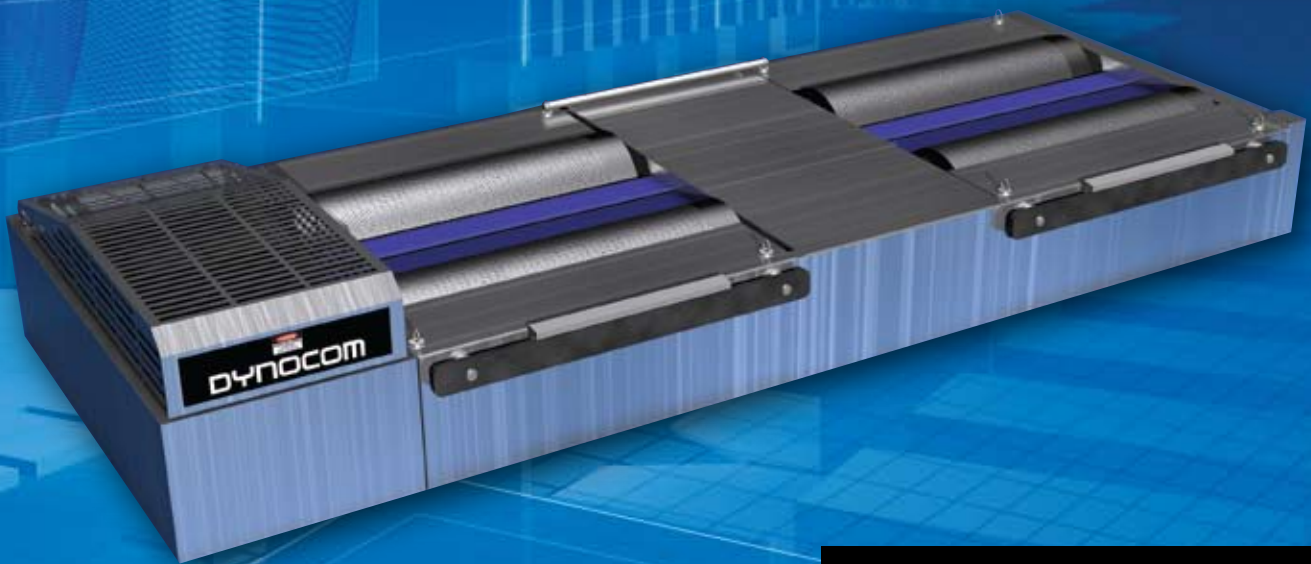


# DYNOCOM INDUSTRIES INC.

AUTOMOTIVE DYNAMOMETERS & DIAGNOSTIC TEST EQUIPMENT

# DDC-1250SE



**DYNOCOM**  
**RACING**  
CHASSIS DYNAMOMETERS • WWW.DYNOCOM.NET • PRICE. PERFORMANCE. PERIOD.

DYNOCOM INDUSTRIES INC. PRICE. PERFORMANCE. PERIOD.

## DC-1250se - FEATURES & OPTIONS

The DC-1250 series is the world's most affordable chassis dynamometer. But don't let its price fool you; the DC1250 dynamometer is capable of supporting speeds up to 160+ MPH and 1250+ HP. The DC-1250 is a compact, 8.5 inch quad roller dynamometer system that is suitable for a wide variety of applications. Perfect for portability in a shop or out for mobile dyno set ups.

The maximum axle weight is 6,000 lbs and the track width range is 14"-86". The DC-1250 was designed for a variety of different testing scenarios – FWD/RWD Cars, Sport Compacts, Trucks, Motorcycles and ATV's.

It is equipped standard with an eddy brake and you are able to perform acceleration, step, sweep and steady-state tests.

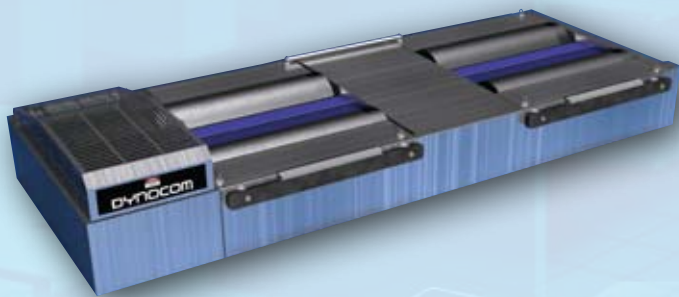
- View in real-time torque/horsepower output, at steady and changing speeds, to instantly evaluate changes you've made to the engine's fuel or timing maps.
- Diagnose engine and drivetrain problems.
- Troubleshoot drivability issues.
- Run track ¼ mile or circle track lap simulations with reaction times that you determine in the software parameters.
- Bi-Directional roller for testing of both RWD and FWD vehicles. The DC 1250 is fully upgradeable in the field, it can be coupled with any other Dynocom Chassis Dynamometer (2400, 1800, 1250 or DC POD's) for All-Wheel-Drive Testing.

### OPTIONS:

- Aluminum Ramps
- Hydraulic Disk Brake(s)
- Wideband Air Fuel
- DC Handheld  
(displays live HP/Torque & A/F)
- Caster Kit with Trailer Dolly (Portability)
- Above Ground Kit



**PRICE INCLUDES:** • CHASSIS DYNAMOMETER WITH EDDY BRAKE • DYNOCOMPUTE SOFTWARE W/MANUAL • DYNOCOM DC-CONTROLLER • DC-JBOX – FOR I/O, AWD AND AWD UPGRADES • ATMOSPHERIC MODULE ( HUMIDITY, BAROMETRIC PRESSURE AND TEMPERATURE ) • ONE YEAR FREE TECHNICAL SUPPORT • ONE YEAR FREE SOFTWARE UPDATES • ONE YEAR WARRANTY ON ALL MECHANICALS DYNAMOMETER ONLY (REPLACEMENT PARTS) • DYNOCOM RACING BANNER • TRAINING AT OUR USA HEADQUARTERS



### SPECIFICATIONS

|                         |                   |
|-------------------------|-------------------|
| Max Speed               | 160+ MPH          |
| Max Vehicle Weight      | 12,000 lbs        |
| Max Axle Weight         | 6,000 lbs         |
| Roller Diameter         | 8.5" Inches       |
| Roller Length           | 35" Inches        |
| Track Maximum           | 86" Inches        |
| Track Minimum           | 14" Inches        |
| Equivalent Linear       | Approx. 550 lbs   |
| Maximum Operations Amps | 20 AMPs @ 220 VAC |

#### Physical Dimensions

|                     |               |
|---------------------|---------------|
| Width               | 35.5" Inches  |
| Height              | 12" Inches    |
| Height w/eddy brake | 17.50" Inches |
| Length              | 116" Inches   |
| Weight              | 1200 lbs      |

- The DC 1250se series is fully upgradeable in the field, it can be coupled with any other Dynocom Chassis Dynamometer (3000, 2400, 1800 or 1500) for All-Wheel-Drive Testing.

Toll Free US/Canada: 1 (866) 436-DYNO ext 1102  
International: (817) 284-8844 • Fax: (817) 284-8847  
[www.dynocom.net](http://www.dynocom.net)