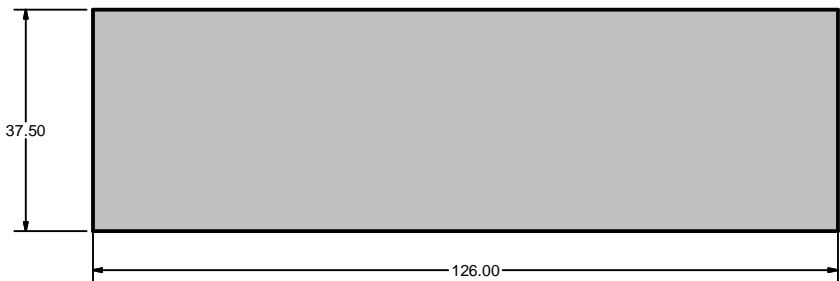


TOP VIEW OF PIT

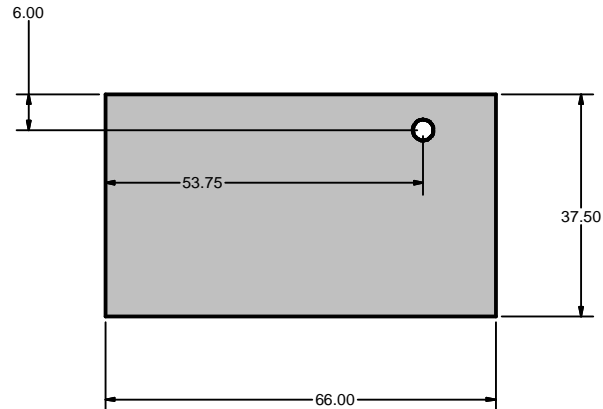
3.5" PVC conduit exiting on operator/PC system side for control wiring.

If equipped with PAU, 1.0" PVC conduit to be placed within 2" from control wiring conduit for 230/240VAC power wire.

All conduits will angle up to exit top flooring approx. 36" from pit wall.



FRONT VIEW OF PIT



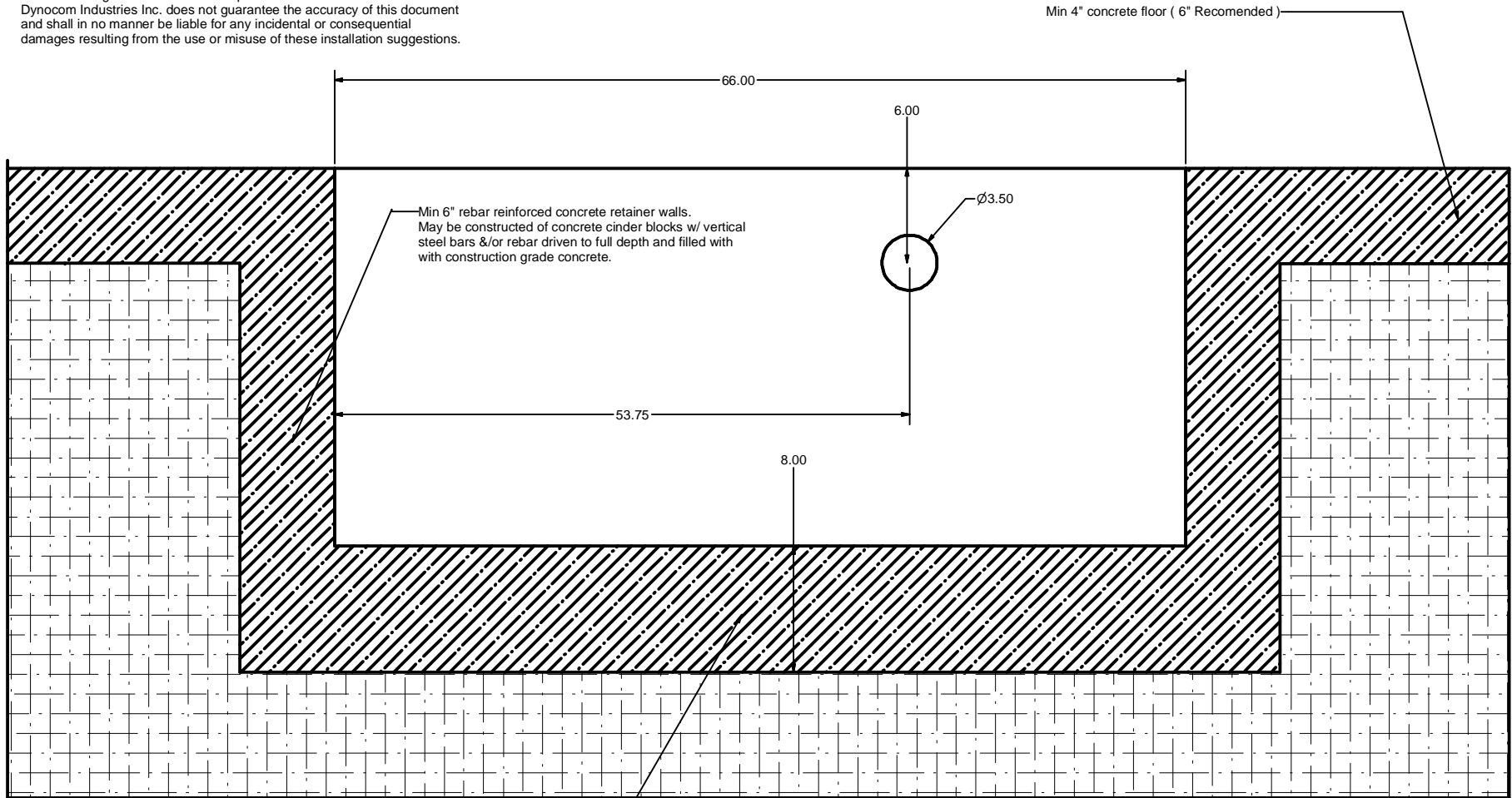
END VIEW OF PIT (DC-CONTROLLER SIDE)

All dimensions represent inside pit distances.  
 AWD/4x4 Secondary Pit depth should be approx.  
 1.0" deeper for track assembly ( i.e. 39.0")

DRAWN	PA	11/11/2004	DYNOCOM INDUSTRIES INC.	
CHECKED	QA		TITLE	
	MFG		DC-2400X Inside Pit Dimensions	
APPROVED			SIZE	DWG NO
			C	DC2400Pit
			SCALE	REV
			1/16	2.0
			SHEET 1 OF 3	

NOTE:

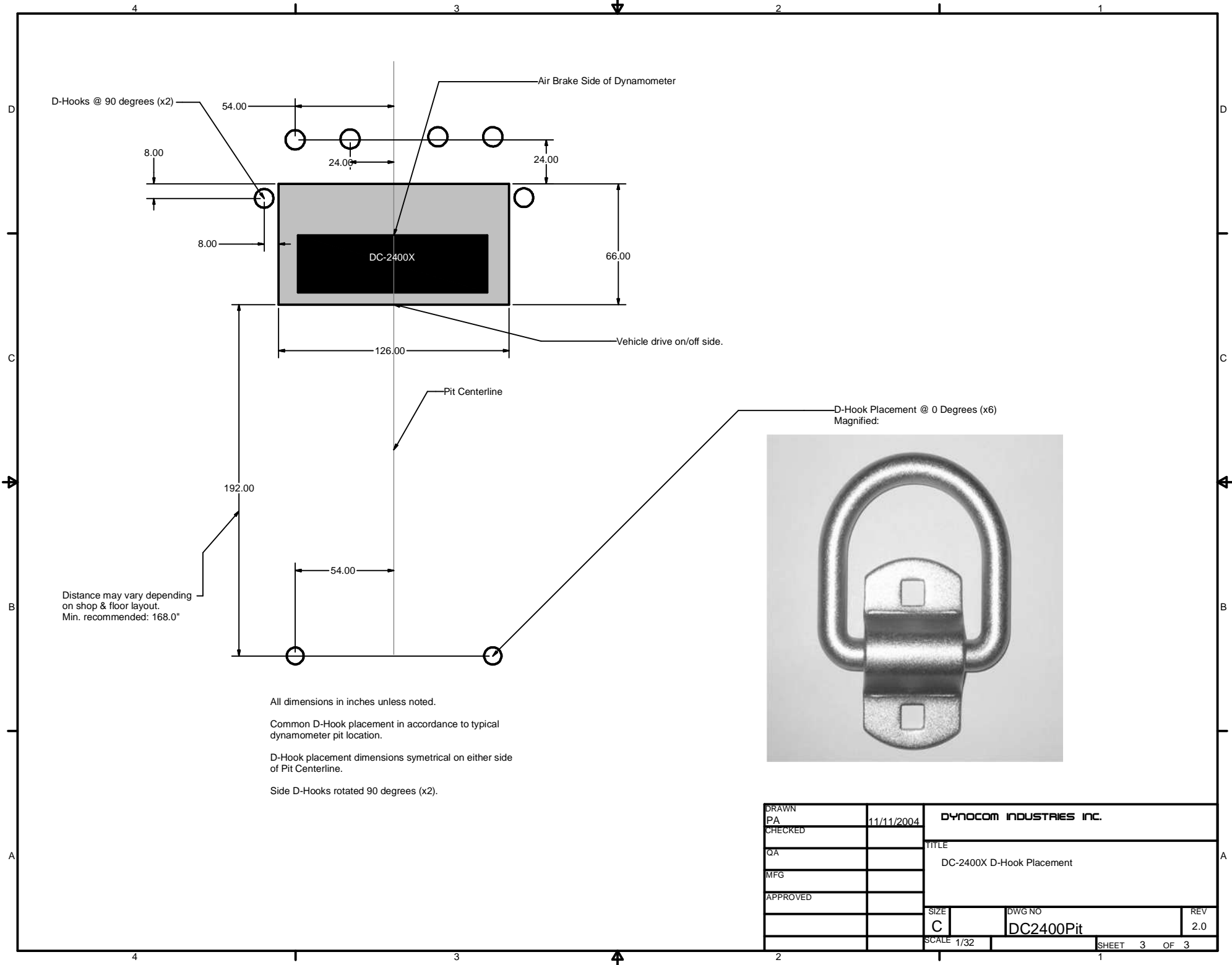
- 1) Construction to follow all governing code requirements.
  - 2) Concrete to be 3000 PSI or better. Concrete thickness at least 6" thick.
  - 3) All reinforcement shall be made with #4 Rebar.
  - 4) Pit floor reinforcement should be placed approx 14" in both directions and 4" from bottom of slab.
  - 5) Placement of a small plastic bucket into bottom pit floor during cement pouring recommended for sump pump provision.
  - 6) Recommend walls and slab to be painted with concrete sealer.
  - 7) These drawings are installation suggestions only. All local, state, and federal regulations and codes supersede this document.
- Dynocom Industries Inc. does not guarantee the accuracy of this document and shall in no manner be liable for any incidental or consequential damages resulting from the use or misuse of these installation suggestions.



Min 8" concrete slab w/ polyethelene vapor barrier on compacted termite treated fill. #4 rebar placed 4" from bottom of slab in two directions.

Waterproofing between concrete walls & earth.  
Polyethelene vapor barrier overlapped on flooring to walls.  
Min 6" rebar reinforced concrete retainer walls.

DRAWN	PA	11/11/2004	DYNOCOM INDUSTRIES INC.	
CHECKED	QA		TITLE	
	MFG		DC-2400X Pit Wall Construction	
APPROVED			SIZE	DWG NO
			C	DC2400Pit
			SCALE	REV
			1/5	2.0
			SHEET 2 OF 3	



All dimensions in inches unless noted.

Common D-Hook placement in accordance to typical dynamometer pit location.

D-Hook placement dimensions symmetrical on either side of Pit Centerline.

Side D-Hooks rotated 90 degrees (x2).

DRAWN	PA	11/11/2004	DYNOCOM INDUSTRIES INC.	
CHECKED			TITLE	
QA			DC-2400X D-Hook Placement	
MFG				
APPROVED				
			SIZE	DWG NO
			C	DC2400Pit
			SCALE 1/32	REV 2.0
			SHEET 3 OF 3	