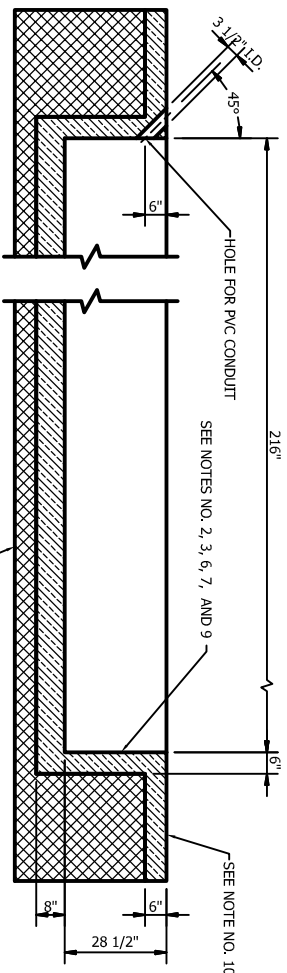
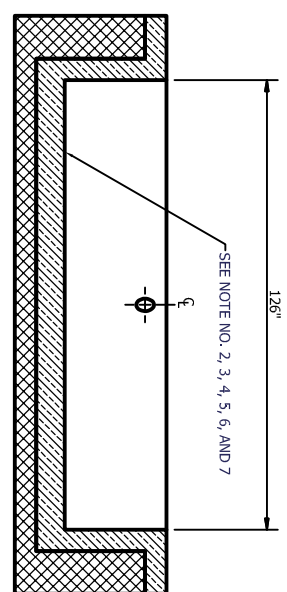


PLAN VIEW OF PIT FLOOR



SECTION D-D



SECTION C-C

- NOTES:**
- CONSTRUCTION TO FOLLOW ALL GOVERNING CODE REQUIREMENTS.
 - CONCRETE TO BE 3000 PSI OR BETTER. CONCRETE THICKNESS AT LEAST 6" THICK WALLS AND 8" THICK ON FLOOR.
 - ALL REINFORCEMENT SHALL BE MADE WITH #4 REBAR.
 - PIT FLOOR REINFORCEMENT SHOULD BE PLACED APPROX. 1 1/4" IN BOTH DIRECTIONS AND 4" FROM BOTTOM OF SLAB IN TWO DIRECTIONS.
 - PLACEMENT OF A SMALL PLASTIC BUCKET INTO BOTTOM OF PIT FLOOR DURING CEMENT POURING RECOMMENDED FOR PUMP PROVISION.
 - RECOMMENDED WALLS AND SLAB TO BE PAINTED WITH CONCRETE SEALER.
 - PLACE POLYETHYLENE VAPOR BARRIER BETWEEN SOIL AND CONCRETE FOR WALLS AND FLOOR ONLY.
 - PIT FLOOR SOIL SHOULD BE COMPACTED AND TERRITRE TREATED.
 - WALLS MAY BE CONSTRUCTED OF CONCRETE CINDER BLOCKS WITH VERTICAL STEEL BARS AND/OR REBAR DRIVEN TO FULL DEPTH AND FILLED WITH CONSTRUCTION GRADE CONCRETE.
 - SHOP FLOOR CONCRETE SHOULD BE MINIMUM OF 4" THICK (DYNOCOM RECOMMENDS USING 6" THICK).
 - THESE DRAWINGS ARE INSTALLATION SUGGESTIONS ONLY. ALL LOCAL, STATE, AND FEDERAL REGULATIONS AND CODES SUPERSEDE THIS DOCUMENT. DYNOCOM INDUSTRIES INC. DOES NOT GUARANTEE THE ACCURACY OF THIS DOCUMENT AND SHALL IN NO MANNER BE LIABLE FOR ANY INCIDENTAL OR CONSEQUENTIAL DAMAGES RESULTING FROM THE USE OR MISUSE OF THESE INSTALLATION SUGGESTIONS.
 - COMMON D-HOOK PLACEMENT IN ACCORDANCE TO TYPICAL DYNOMETER PTT LOCATION.
 - SIDE D-HOOKS ROTATED 90°.
 - OPTIONALLY INCREASE FIT WIDTH TO 138" FOR 1800S MODELS, 150" FOR 1800X MODELS FOR MECHANICAL LINKAGE OPTION.

(SEE NOTE 14 FOR MECHANICAL LINKAGE OPTION 138"/150")

| | | | |
|---|-------------|---------|----------|
| DESIGNED BY | P. MCCARTHY | DATE | 5/8/2008 |
| CHECKED BY | P. ARSENEAU | | |
| APPROVED BY | | | |
| DYNOCOM INDUSTRIES | | | |
| Automotive Software & Hardware Data Systems | | | |
| DCI-1800X AWD PIT WALL CONSTRUCTION | | | |
| SIZE | C | DWG NO. | DCI-7051 |
| SCALE | | | |
| REV | 3 | | |